

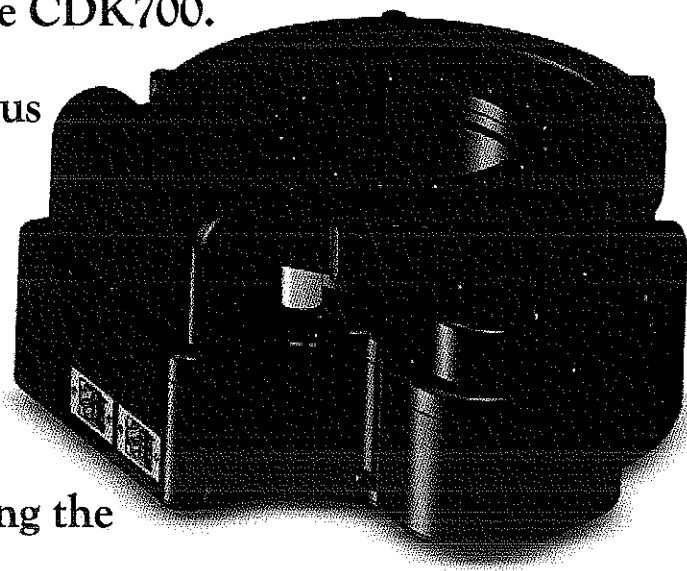
PlaneWave

INSTRUMENTS

IRF90

Integrated Rotating Focuser

- The IRF90 is a large capacity Integrated Focuser and Rotator compatible with the CDK17, CDK20, CDK24, and the CDK700.
- Capable of lifting 40 lbs (18 kg) with a focus travel of 30mm (30000 microns).
- The Rotator has a 90mm aperture with a range of 365 degrees with internal hardstops to prevent cord wrap.
- The IRF90 can be controlled remotely using the included PlaneWave Interface software



*Requires a standard Electronic Focuser Assembly (EFA) for remote use

www.planewave.com

IRF90-15-90020



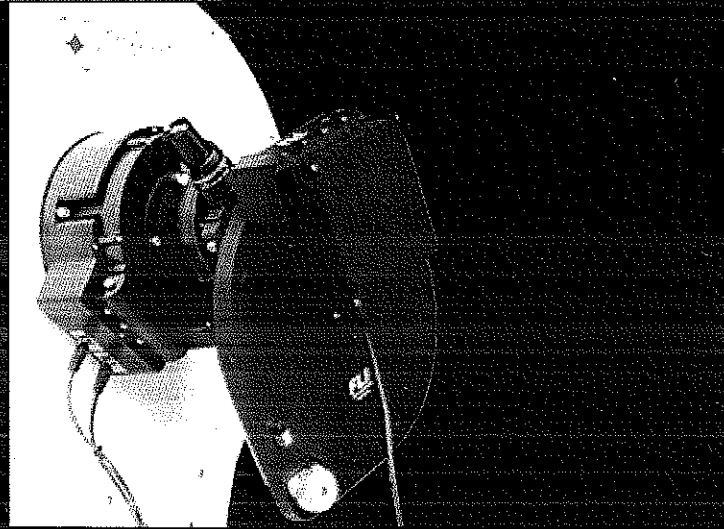
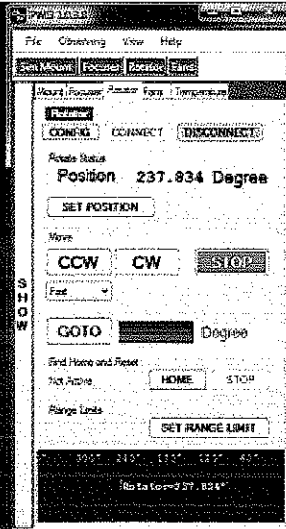
IRF90 - Technical Specifications

Item Number #600180

Weight
Payload Capacity
Min Focus Height
Focus Travel
Rotation Travel
Gear

14lbs (6.4kg)
40lbs (18kg)
3.5in (89mm)
30mm (1.2in)
365 degrees
7.5in (191mm) Diameter,
360 tooth

Price \$4,500



The IRF90 can be remotely controlled using the included PlaneWave Interface (PWI) software

The IRF90 uses the same design as the image de-rotator used on the observatory class CDK700